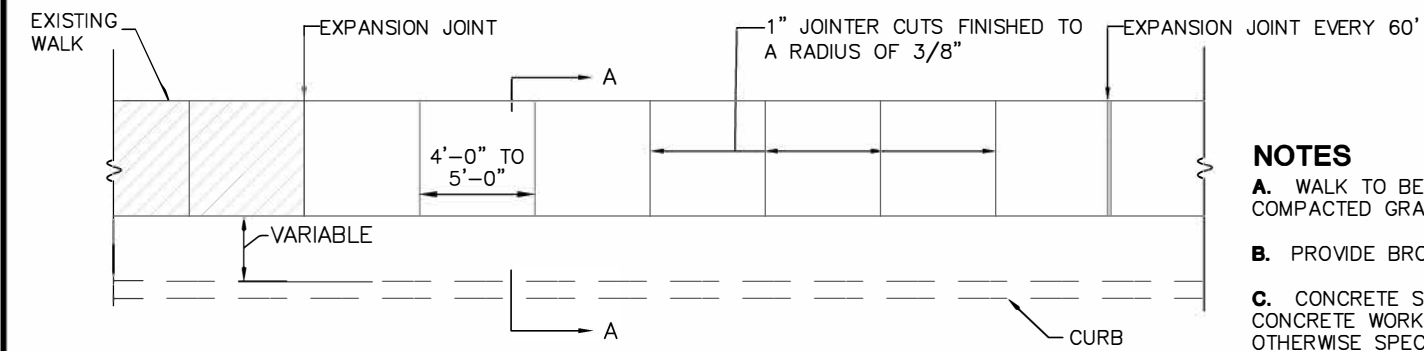
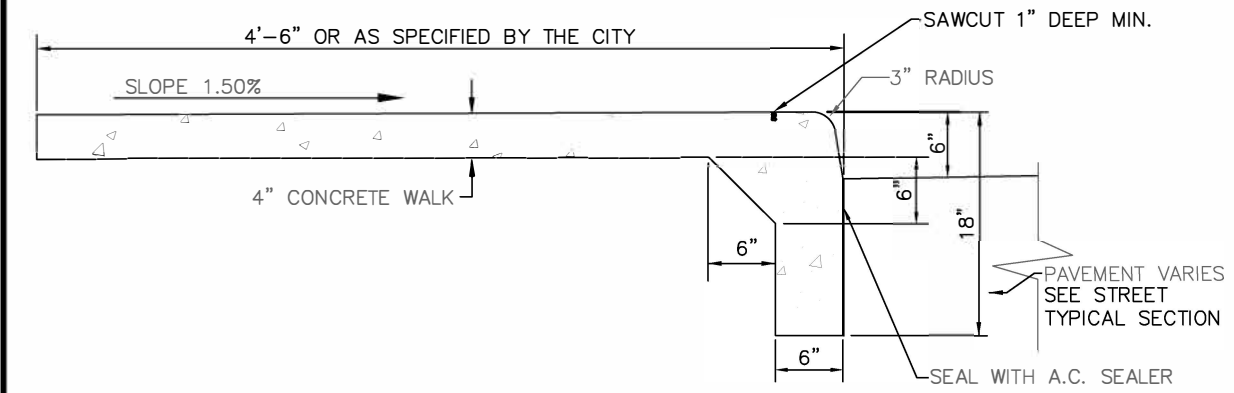


SECTION A-A



PLAN VIEW



COMBINED CURB AND SIDEWALK DETAIL

NOTES

- A.** WALK TO BE POURED ON UNDISTURBED EARTH OR COMPACTED GRANULAR BEDDING.
- B.** PROVIDE BROOM FINISH TO ALL EXPOSED SURFACES.
- C.** CONCRETE SHALL CONFORM TO ODOT ITEM 499 CONCRETE. CONCRETE WORK SHALL CONFORM TO ODOT ITEM 608, UNLESS OTHERWISE SPECIFIED WITHIN.
- D.** PROVIDE EDGING AROUND ALL EXPOSED SURFACES. RETRACE LONGITUDINAL EDGES AFTER BROOMING. DO NOT RETRACE TRANSVERSE JOINTS.
- E.** USE WHITE CURING COMPOUND IMMEDIATELY AFTER FINISHING SURFACES. ANY OTHER METHOD OR TYPE OF CURING COMPOUND MUST BE PREAPPROVED.
- F.** WHEN RENOVATING EXISTING STREETS, THE SIDEWALKS SHALL BE REPLACED TO CONFORM WITH THE CITY CONSTRUCTION STANDARDS AND DRAWINGS.
- G.** CONCRETE SHALL BE ODOT CLASS QC-1 (4000 PSI AT 28 DAYS).
- H.** CONCRETE SHALL CONTAIN 6% ± 1% OF TOTAL AIR.
- I.** SIDEWALKS PARALLEL AND ADJACENT TO THE STREET SHALL NOT HAVE A FAUX FINISH (i.e. STAMPING OR DYEING).

CONCRETE SIDEWALK DETAIL