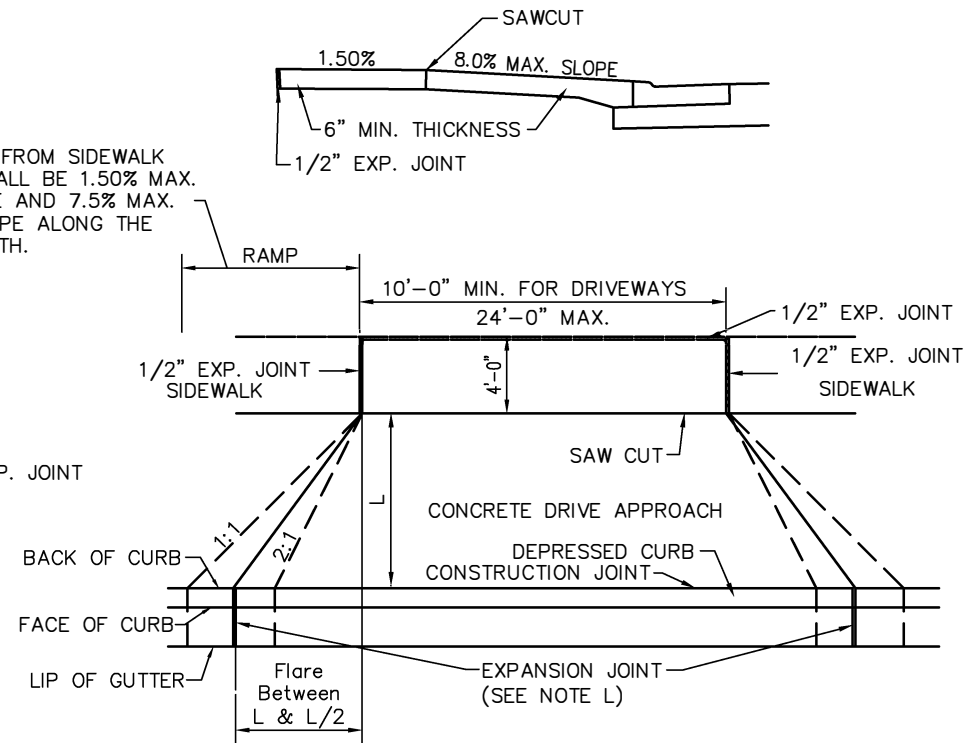


FOR TREE LAWNS OF  
LESS THAN 6'-0"



FOR TREE LAWNS OF  
6'-0" OR MORE

NOTES

- A. DRIVE APPROACHES SHALL MEET THE REQUIREMENTS OF ODOT ITEM 452 AND 499 CAST-IN-PLACE CONCRETE.
- B. MAXIMUM JOINT SPACING SHALL BE 10' LONGITUDINALLY, TRANSVERSELY AND AT TAPERS.
- C. EXPANSION MATERIAL SHALL BE 1/2" PREMOLDED.
- D. 3" OF GRAVEL SHALL BE PLACED UNDER DRIVE APPROACHES IF DETERMINED NECESSARY BY THE Village.
- E. PROVIDE BROOM FINISH AND EDGING TO ALL EXPOSED SURFACES.

- F. WHERE CURB HAS NOT BEEN PROPERLY DROPPED AT DRIVE APPROACHES, THE CURB AND GUTTER SHALL BE ENTIRELY REMOVED AND REPLACED BY THE CONTRACTOR/OWNER UNLESS OTHERWISE APPROVED.
- G. JOINTS SHALL BE CLEANED AND EDGED BY A 1/4" RADIUS EDGER. LONGITUDINAL JOINTS SHALL BE AS DIRECTED BY THE Village. EXPANSION JOINTS SHALL BE OF SUCH DIMENSIONS AS SHOWN ON STANDARD DRAWINGS FOR CONSTRUCTION JOINTS.
- H. WHERE ASPHALTIC CONCRETE PAVEMENT IS DISTURBED, THE PAVEMENT SHALL BE REPLACED WITH HOT MIX ASPHALT SURFACE COURSE THE FULL DEPTH OF THE DISTURBANCE UNLESS AN EXCEPTION IS GRANTED BY THE CITY DURING THE PERMIT PROCESS.
- I. EXPANSION JOINT LOCATIONS MAY BE ALTERED WITH Village APPROVAL.

- J. CONCRETE SHALL BE ODOT CLASS QC-1 (4000 PSI AT 28 DAYS)
- K. CONCRETE SHALL CONTAIN 6% ± 1% OF TOTAL AIR.
- L. IF CURB AND GUTTER ARE REMOVED AND REPLACED DURING DRIVEWAY CONSTRUCTION, JOINTS BETWEEN EXISTING AND NEW CURB AND GUTTER ARE TO CONTAIN 1/2" EXPANSION MATERIAL.
- M.

RESIDENTIAL DRIVE APPROACH